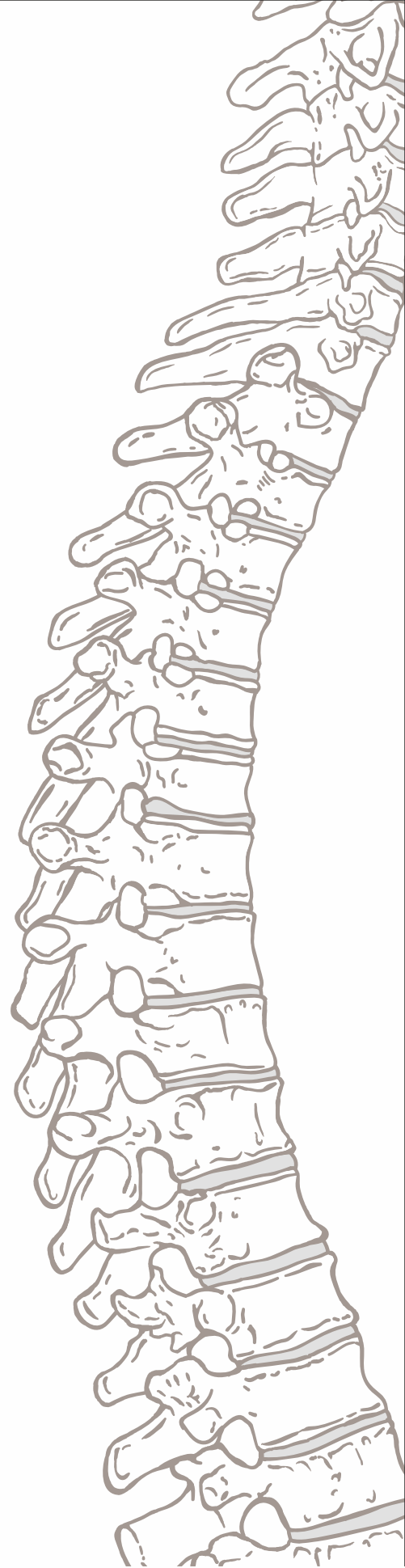
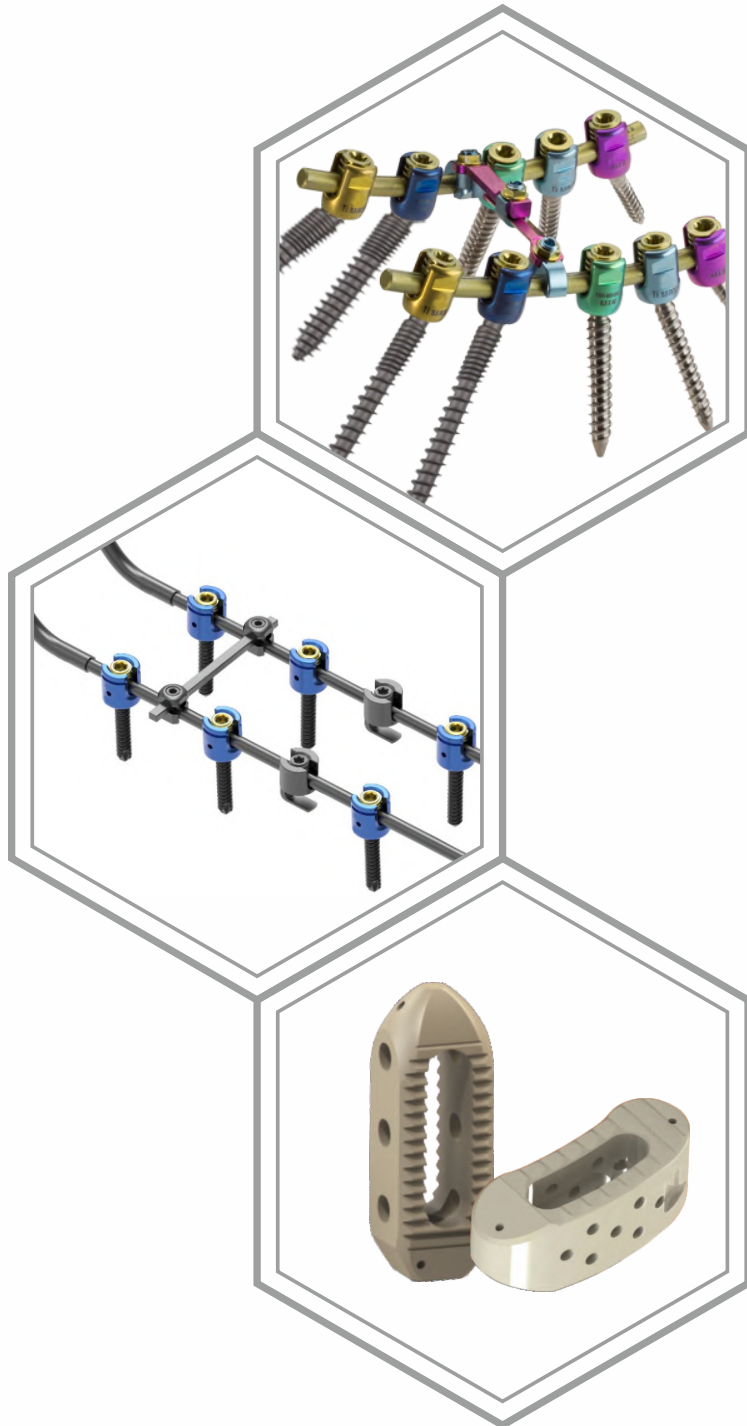


AOSYS®

Revolutionising healthcare with innovation

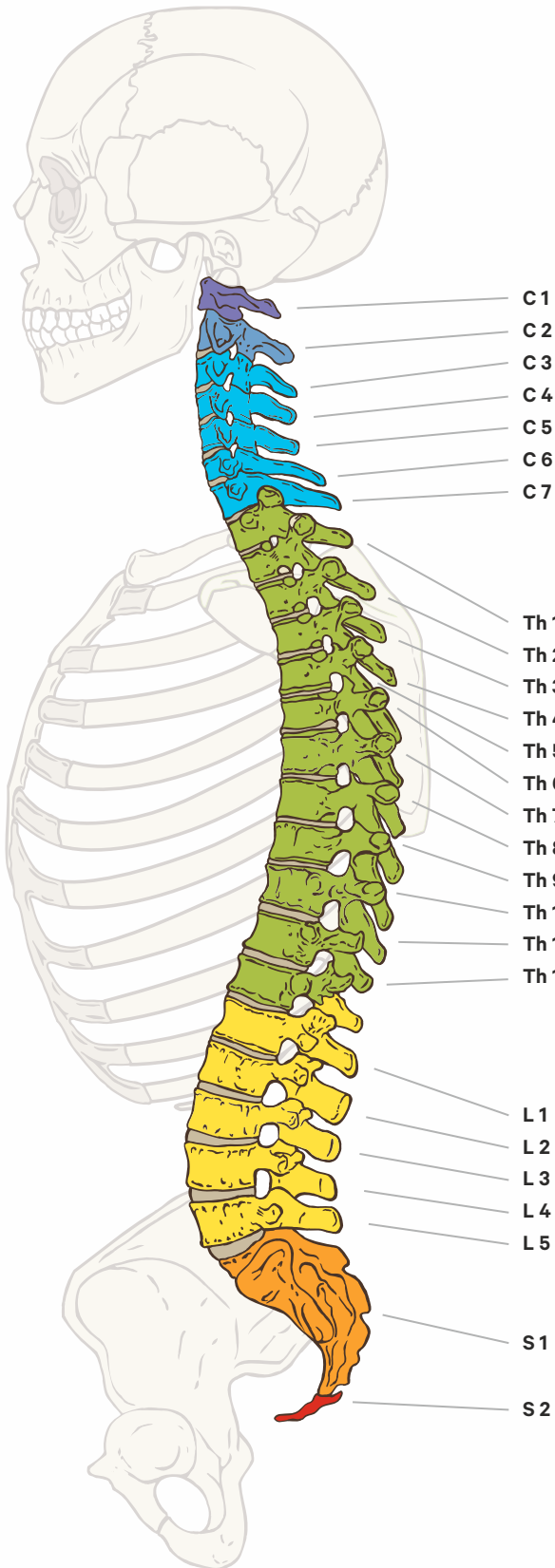


Spine System

Product Marketed by



Vertebral Column • Reflexology Chart



Cervical Spine

C 1	Atlas	Head - Brain - Inner and Middle Ears
C 2	Axis	Auditory Nerves - Sinuses - Eyes - Tongue
C 3	3. Cervical vertebrae	Teeth - Cheeks - Outer Ears
C 4	4. Cervical vertebrae	Nose - Mouth - Lips - Eustachian Tubes
C 5	5. Cervical vertebrae	Pharynx - Vocal Cords
C 6	6. Cervical vertebrae	Shoulders - Neck - Tonsils
C 7	7. Cervical vertebrae	Thyroids - Elbows

Thoracic Spine

Th 1	1. Thoracic vertebrae	Trachea - Esophagus - Lower Arms - Fingers
Th 2	2. Thoracic vertebrae	Heart
Th 3	3. Thoracic vertebrae	Lungs - Chest - Breast
Th 4	4. Thoracic vertebrae	Gall Bladders
Th 5	5. Thoracic vertebrae	Liver - Blood Circulation - Solar Plexus
Th 6	6. Thoracic vertebrae	Stomach
Th 7	7. Thoracic vertebrae	Pancreas - Duodenum
Th 8	8. Thoracic vertebrae	Spleen
Th 9	9. Thoracic vertebrae	Adrenal Glands
Th 10	10. Thoracic vertebrae	Kidneys
Th 11	11. Thoracic vertebrae	Ureters
Th 12	12. Thoracic vertebrae	Small Intestines - Lymph Circulation

Lumbar Spine

L 1	1. Lumbar vertebrae	Large Intestines - Inguinal Region
L 2	2. Lumbar vertebrae	Abdomen - Appendix - Upper Legs
L 3	3. Lumbar vertebrae	Bladder - Sex Organs - Knees
L 4	4. Lumbar vertebrae	Sciatic Nerves - Prostate Gland
L 5	5. Lumbar vertebrae	Lower Legs - Feet

Sacrum

Hip Bones - Buttocks

Coccyx

Rectum - Anus

Mono Axial Screw Dual Thread (Titanium)

Ø 4.0mm

Code No.	Size
A27010418	18mm
A27010420	20mm
A27010425	25mm
A27010430	30mm
A27010435	35mm
A27010440	40mm
A27010445	45mm
A27010450	50mm

Ø 4.5mm

Code No.	Size
A27014520	20mm
A27014525	25mm
A27014530	30mm
A27014535	35mm
A27014540	40mm
A27014545	45mm
A27014550	50mm
A27014555	55mm
A27014560	60mm

Ø 5.5mm

Code No.	Size
A27015530	30mm
A27015535	35mm
A27015540	40mm
A27015545	45mm
A27015550	50mm
A27015555	55mm
A27015560	60mm
A27015565	65mm
A27015570	70mm

Ø 6.5mm

Code No.	Size
A27016530	30mm
A27016535	35mm
A27016540	40mm
A27016545	45mm
A27016550	50mm
A27016555	55mm
A27016560	60mm
A27016565	65mm
A27016570	70mm

Ø 7.5mm

Code No.	Size
A27017530	30mm
A27017535	35mm
A27017540	40mm
A27017545	45mm
A27017550	50mm
A27017555	55mm
A27017560	60mm
A27017565	65mm
A27017570	70mm
A27017575	75mm
A27017580	80mm

Ø 8.5mm

Code No.	Size
A27018550	50mm
A27018555	55mm
A27018560	60mm
A27018565	65mm
A27018570	70mm
A27018575	75mm
A27018580	80mm
A27018585	85mm
A27018590	90mm
A27018595	95mm
A270185100	100mm

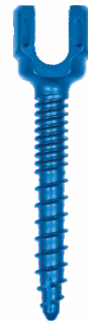
Ø 4.5mm



Ø 5.5mm



Ø 6.5mm



Poly Axial Screw Dual Thread (Titanium)

Ø 4.0mm

Code No.	Size
A27020418	18mm
A27020420	20mm
A27020425	25mm
A27020430	30mm
A27020435	35mm
A27020440	40mm
A27020445	45mm
A27020450	50mm

Ø 4.5mm

Code No.	Size
A27024520	20mm
A27024525	25mm
A27024530	30mm
A27024535	35mm
A27024540	40mm
A27024545	45mm
A27024550	50mm
A27024555	55mm
A27024560	60mm
A27024565	65mm
A27024570	70mm

Ø 5.5mm

Code No.	Size
A27025530	30mm
A27025535	35mm
A27025540	40mm
A27025545	45mm
A27025550	50mm
A27025555	55mm
A27025560	60mm
A27025565	65mm
A27025570	70mm

Ø 6.5mm

Code No.	Size
A27026530	30mm
A27026535	35mm
A27026540	40mm
A27026545	45mm
A27026550	50mm
A27026555	55mm
A27026560	60mm
A27026565	65mm
A27026570	70mm

Ø 7.5mm

Code No.	Size
A27027530	30mm
A27027535	35mm
A27027540	40mm
A27027545	45mm
A27027550	50mm
A27027555	55mm
A27027560	60mm
A27027565	65mm
A27027570	70mm
A27027575	75mm
A27027580	80mm

Ø 8.5mm

Code No.	Size
A27028550	50mm
A27028555	55mm
A27028560	60mm
A27028565	65mm
A27028570	70mm
A27028575	75mm
A27028580	80mm
A27028585	85mm
A27028590	90mm
A27028595	95mm
A270285100	100mm

Ø 4.5mm



Ø 5.5mm



Ø 6.5mm



Mono Reduction Screw Dual Thread (Titanium)

Ø 4.5mm		Ø 5.5mm		Ø 6.5mm		Ø 7.5mm	
Code No.	Size	Code No.	Size	Code No.	Size	Code No.	Size
A27034518	18mm	A27035530	30mm	A27036530	30mm	A27037530	30mm
A27034520	20mm	A27035535	35mm	A27036535	35mm	A27037535	35mm
A27034525	25mm	A27035540	40mm	A27036540	40mm	A27037540	40mm
A27034530	30mm	A27035545	45mm	A27036545	45mm	A27037545	45mm
A27034535	35mm	A27035550	50mm	A27036550	50mm	A27037550	50mm
A27034540	40mm	A27035555	55mm	A27036555	55mm	A27037555	55mm
A27034545	45mm	A27035560	60mm	A27036560	60mm	A27037560	60mm
A27034550	50mm						



Poly Reduction Screw Dual Thread (Titanium)

Ø 4.5mm		Ø 5.5mm		Ø 6.5mm		Ø 7.5mm	
Code No.	Size	Code No.	Size	Code No.	Size	Code No.	Size
A27044518	18mm	A27045530	30mm	A27046530	30mm	A27047530	30mm
A27044520	20mm	A27045535	35mm	A27046535	35mm	A27047535	35mm
A27044525	25mm	A27045540	40mm	A27046540	40mm	A27047540	40mm
A27044530	30mm	A27045545	45mm	A27046545	45mm	A27047545	45mm
A27044535	35mm	A27045550	50mm	A27046550	50mm	A27047550	50mm
A27044540	40mm	A27045555	55mm	A27046555	55mm	A27047555	55mm
A27044545	45mm	A27045560	60mm	A27046560	60mm	A27047560	60mm
A27044550	50mm						



Inner Screw for Pedical Screw (Titanium)

Code No.
A270700



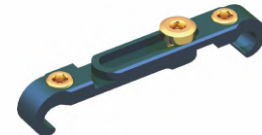
Break off Inner Screw for Pedical Screw (Titanium)

Code No.
A270700B



Cross link connector (Titanium)

Code No.	Size	Code No.	Size
A27053034	30/34mm	A27054053	40/53mm
A27053442	34/42mm	A27055070	50/70mm



Spinal Rod, Dia. 5.5 mm (Titanium)

Code No.	Size	Code No.	Size	Code No.	Size
A270655040	40mm	A270655095	95mm	A270655190	190mm
A270655045	45mm	A270655100	100mm	A270655200	200mm
A270655050	50mm	A270655110	110mm	A270655250	250mm
A270655055	55mm	A270655120	120mm	A270655300	300mm
A270655060	60mm	A270655130	130mm	A270655350	350mm
A270655065	65mm	A270655140	140mm	A270655400	400mm
A270655070	70mm	A270655150	150mm	A270655450	450mm
A270655075	75mm	A270655160	160mm	A270655500	500mm
A270655080	80mm	A270655170	170mm	A270655550	550mm
A270655085	85mm	A270655180	180mm	A270655600	600mm
A270655090	90mm				



Inline Connector 5.5 x 5.5mm (Titanium)

Code : A2737



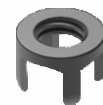
Inline Connector Long 5.5 x 5.5mm (Titanium)

Code : A2738



Spine Staple (Titanium)

Code : A2739



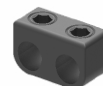
Domino Connector Square 5.5 x 5.5mm (Titanium)

Code : A2740



Domino Connector Rectangle 5.5 x 5.5mm (Titanium)

Code : A2741



Lateral Connector 5.5mm (Titanium)

Code No.	LENGTH
A2742020	20mm
A2742030	30mm
A2742040	40mm



20 mm



30 mm



40 mm

Anterior Cervical Plate (Titanium)

Code No.	Size	Code No.	Size	Code No.	Size
A2708021	21mm	A2708475	47.5mm	A2708075	75.0mm
A2708023	23mm	A2708050	50.0mm	A2708775	77.5mm
A2708025	25mm	A2708525	52.5mm	A2708080	80.0mm
A2708275	27.5mm	A2708055	55.0mm	A2708825	82.5mm
A2708030	30mm	A2708575	57.5mm	A2708085	85.0mm
A2708325	32.5mm	A2708060	60.0mm	A2708875	87.5mm
A2708035	35mm	A2708625	62.5mm	A2708090	90.0mm
A2708375	37.5mm	A2708065	65.0mm	A2708095	95.0mm
A2708040	40.0mm	A2708675	67.5mm	A2708100	100mm
A2708425	42.5mm	A2708070	70.0mm	A2708105	105mm
A2708045	45.0mm	A2708725	72.5mm	A2708110	110mm



Cervical Screw (Titanium)

Ø 4.0mm		Ø 4.3mm		Ø 4.5mm	
Code No.	Size	Code No.	Size	Code No.	Size
A27094010	10mm	A27094310	10mm	A27094510	10mm
A27094012	12mm	A27094312	12mm	A27094512	12mm
A27094014	14mm	A27094314	14mm	A27094514	14mm
A27094016	16mm	A27094316	16mm	A27094516	16mm
A27094018	18mm	A27094318	18mm	A27094518	18mm
A27094020	20mm	A27094320	20mm	A27094520	20mm



Mesh Cage (Titanium)



Code No.	Dia	Size
A27101090	10mm	90mm
A27101290	12mm	90mm
A27101490	14mm	90mm
A27101690	16mm	90mm
A27101890	18mm	90mm
A27102090	20mm	90mm

Expandable Corpectomy Cage (Titanium)



Code No.	Dia.	Size	Code No.	Dia.	Size
A27111220	12mm	20mm to 25mm	A27111232	12mm	32mm to 50mm
A27111420	14mm	20mm to 25mm	A27111432	14mm	32mm to 50mm
A27111620	16mm	20mm to 25mm	A27111632	16mm	32mm to 50mm
A27111820	18mm	20mm to 25mm	A27111832	18mm	32mm to 50mm
A27111224	12mm	24mm to 33mm	A27111249	12mm	49mm to 70mm
A27111424	14mm	24mm to 33mm	A27111449	14mm	49mm to 70mm
A27111624	16mm	24mm to 33mm	A27111649	16mm	49mm to 70mm
A27111824	18mm	24mm to 33mm	A27111849	18mm	49mm to 70mm

Expandable Corpectomy Cage with Plate (Titanium)



Code No.	Dia.	Size	Code No.	Dia.	Size
A27121218	12mm	18mm to 22mm	A27121228	12mm	28mm to 38mm
A27121418	14mm	18mm to 22mm	A27121428	14mm	28mm to 38mm
A27121618	16mm	18mm to 22mm	A27121628	16mm	28mm to 38mm
A27121221	12mm	21mm to 30mm	A27121238	12mm	38mm to 60mm
A27121421	14mm	21mm to 30mm	A27121438	14mm	38mm to 60mm
A27121621	16mm	21mm to 30mm	A27121638	16mm	38mm to 60mm

Plif-Bullet Cage (Titanium & Peek)

Code No. (Titanium)	Code No. (Peek)	Dia.	Size	Code No. (Titanium)	Code No. (Peek)	Dia.	Size
A27130822	A47130822	8.0mm	22 x 10 x 8 mm, 0°	A27131222	A47131222	12.0mm	22 x 10 x 12 mm, 0°
A27130825	A47130825		25 x 10 x 8 mm, 0°	A27131225	A47131225		25 x 10 x 12 mm, 0°
A27130830	A47130830		30 x 10 x 8 mm, 0°	A27131230	A47131230		30 x 10 x 12 mm, 0°
A27130922	A47130922	9.0mm	22 x 10 x 9 mm, 0°	A27131322	A47131322	13.0mm	22 x 10 x 13 mm, 0°
A27130925	A47130925		25 x 10 x 9 mm, 0°	A27131325	A47131325		25 x 10 x 13 mm, 0°
A27130930	A47130930		30 x 10 x 9 mm, 0°	A27131330	A47131330		30 x 10 x 13 mm, 0°
A27131022	A47131022	10.0mm	22 x 10 x 10 mm, 0°	A27131422	A47131422	14.0mm	22 x 10 x 14 mm, 0°
A27131025	A47131025		25 x 10 x 10 mm, 0°	A27131425	A47131425		25 x 10 x 14 mm, 0°
A27131030	A47131030		30 x 10 x 10 mm, 0°	A27131430	A47131430		30 x 10 x 14 mm, 0°
A27131122	A47131122	11.0mm	22 x 10 x 11 mm, 0°				
A27131125	A47131125		25 x 10 x 11 mm, 0°				
A27131130	A47131130		30 x 10 x 11 mm, 0°				



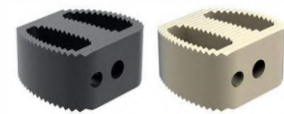
Tlif-Banana Cage (Titanium & Peek)

Code No. (Titanium)	Code No. (Peek)	Dia.	Size	Code No. (Titanium)	Code No. (Peek)	Dia.	Size
A2714082712	A4714082712	8.0mm	L(mm) 27 W(mm)12	A2714122712	A4714122712	12.0mm	L(mm) 27 W(mm)12
A2714083012	A4714083012		L(mm) 30 W(mm)12	A2714123012	A4714123012		L(mm) 30 W(mm)12
A2714092712	A4714092712	9.0mm	L(mm) 27 W(mm)12	A2714132712	A4714132712	13.0mm	L(mm) 27 W(mm)12
A2714093012	A4714093012		L(mm) 30 W(mm)12	A2714133012	A4714133012		L(mm) 30 W(mm)12
A2714102712	A4714102712	10.0mm	L(mm) 27 W(mm)12	A2714142712	A4714142712	14.0mm	L(mm) 27 W(mm)12
A2714103012	A4714103012		L(mm) 30 W(mm)12	A2714143012	A4714143012		L(mm) 30 W(mm)12
A2714112712	A4714112712	11.0mm	L(mm) 27 W(mm)12				
A2714113012	A4714113012		L(mm) 30 W(mm)12				



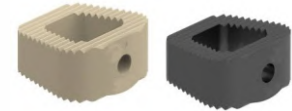
D-Anterior Cervical Cage (Titanium & Peek)

Code No. (Titanium)	Code No. (Peek)	Size
A271505	A471505	5mm
A271506	A471506	6mm
A271507	A471507	7mm
A271508	A471508	8mm
A271509	A471509	9mm
A271510	A471510	10mm
A271511	A471511	11mm



Duo- Anterior Cervical Cage (Titanium & Peek)

Code No. (Titanium)	Code No. (Peek)	Size
A271605	A471605	5mm
A271606	A471606	6mm
A271607	A471607	7mm
A271608	A471608	8mm
A271609	A471609	9mm
A271610	A471610	10mm
A271611	A471611	11mm



Autoblock- Anterior Cervical Cage with Screw (Titanium & Peek)

Code No. (Titanium)	Code No. (Peek)	Size
A271705	A471705	5mm
A271706	A471706	6mm
A271707	A471707	7mm
A271708	A471708	8mm
A271709	A471709	9mm
A271710	A471710	10mm



Cervical Cage (Titanium & Peek)

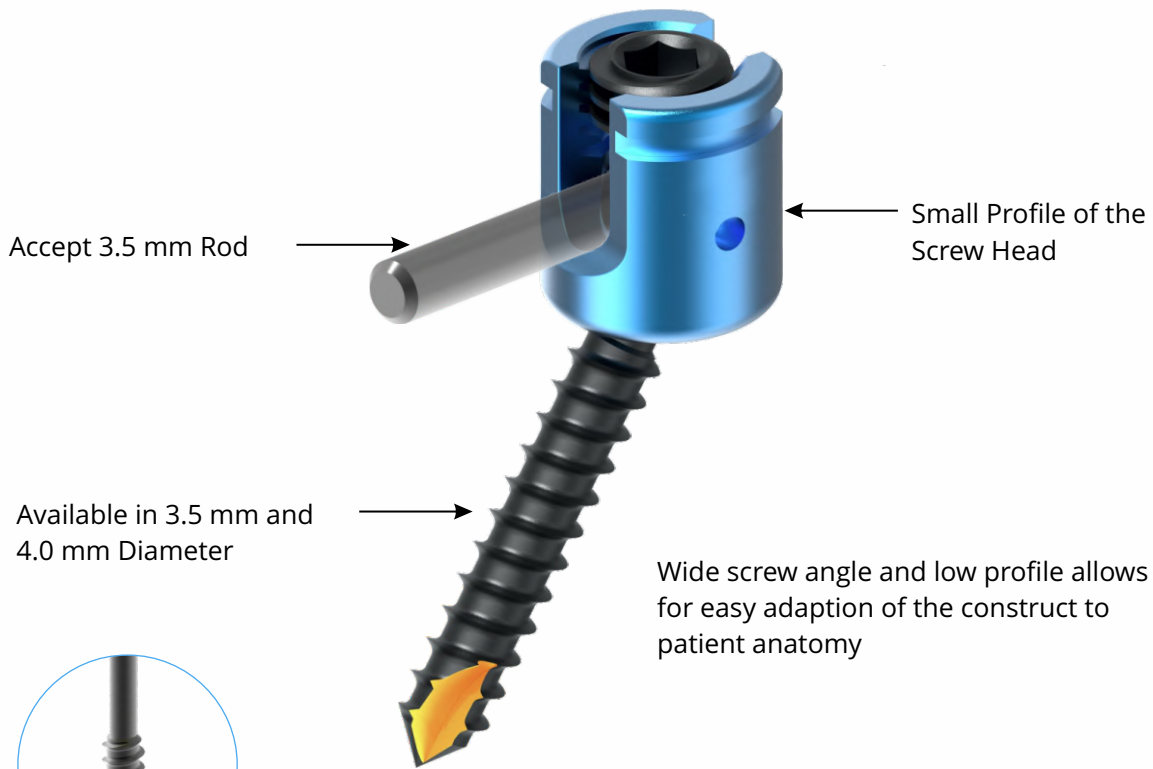
Code No. (Titanium)	Code No. (Peek)	Size
A271805	A471805	5mm
A271806	A471806	6mm
A271807	A471807	7mm
A271808	A471808	8mm
A271809	A471809	9mm
A271810	A471810	10mm



Cervical Cage with Plate (Titanium & Peek)

Code No. (Titanium)	Code No. (Peek)	Size
A271905	A471905	5mm
A271906	A471906	6mm
A271907	A471907	7mm
A271908	A471908	8mm
A271909	A471909	9mm
A271910	A471910	10mm





Accept 3.5 mm Rod

Small Profile of the Screw Head

Available in 3.5 mm and 4.0 mm Diameter

Wide screw angle and low profile allows for easy adaption of the construct to patient anatomy



Partially Thread option available in 3.5 mm and 4.0 mm Diameter



Set screw thread design ensures maximum strength and stabilization of the polyaxial construct

Inner Screw for PCS

Code : A2727

Posterior Cervical Screw Full Thread
Dia. 3.5mm (Titanium)

Code No.	Dia.
A272012	12mm
A272014	14mm
A272016	16mm
A272018	18mm
A272020	20mm
A272022	22mm
A272024	24mm
A272026	26mm
A272028	28mm
A272030	30mm

Posterior Cervical Screw Short Thread
Dia. 3.5mm (Titanium)

Code No.	Dia.
A272812	12mm
A272814	14mm
A272816	16mm
A272818	18mm
A272820	20mm
A272822	22mm
A272824	24mm
A272826	26mm
A272828	28mm
A272830	30mm

Posterior Cervical Screw Full Thread
Dia. 4.0mm (Titanium)

Code No.	Dia.
A272112	12mm
A272114	14mm
A272116	16mm
A272118	18mm
A272120	20mm
A272122	22mm
A272124	24mm
A272126	26mm
A272128	28mm
A272130	30mm

Posterior Cervical Screw Short Thread
Dia. 4.0mm (Titanium)

Code No.	Dia.
A272912	12mm
A272914	14mm
A272916	16mm
A272918	18mm
A272920	20mm
A272922	22mm
A272924	24mm
A272926	26mm
A272928	28mm
A272930	30mm

Adjustable Occipital Plate

- » Rotating and translating saddles allow for flexibility in rod placement
- » Multiple screw holes for flexible screw placement (must place at least four screws)
- » Arched design for increased bone graft volume on the occiput
- » Low-profile design
- » Lateral screw placement for torsional stability
- » Contoured with the Occipital Plate Bender



Code No.	SIZE
A2722S	Small
A2722M	Medium
A2722L	Large

Adjustable Occipital Plate II

- » Pre-contoured to match anatomy of the occipitocervical junction
- » Available in 3.5mm diameters
- » Available in 100mm and 200mm lengths

Code No.	SIZE
A2730100	100mm
A2730200	200mm



Occipital Screw

Dia. 4mm

Dia. 4.35mm



Code No.	SIZE	Code No.	SIZE
A272306	06 mm	A272406	06 mm
A272308	08 mm	A272408	08 mm
A272310	10 mm	A272410	10 mm
A272312	12 mm	A272412	12 mm

Posterior Cervical Connecting Rod Ø 3.5 mm

Code No.	SIZE
A2726150	150mm
A2726200	200mm
A2726250	250mm
A2726300	300mm



Tapered Spine Rod Ø 3.5 mm to 5.5 mm.

Code No.	SIZE
A2731200	200mm
A2731300	300mm



Pre Bend Connecting Rod Ø 3.5mm

Code No.	SIZE
A2725100	100mm
A2725200	200mm
A2725300	300mm



Transverse Connector for PCS

Code : A2732



Lamina Hook for PCS

- » Accept 3.5mm diameter rods
- » Left and right laminar offset hooks

Code : A2733



Offset domino connector 3.5mm to 5.5mm Rod

- » Enable connection from 3.5mm rod diameters to 5.5mm rod diameters
- » Allow for medial/lateral offset of rods at the transition point

Code : A2734



Axial domino connector for 3.5mm Rod

- » Enable connection from 3.5mm rod diameters to 5.5mm rod diameters
- » Allow for axial alignment of rods at the transition point

Code : A2735

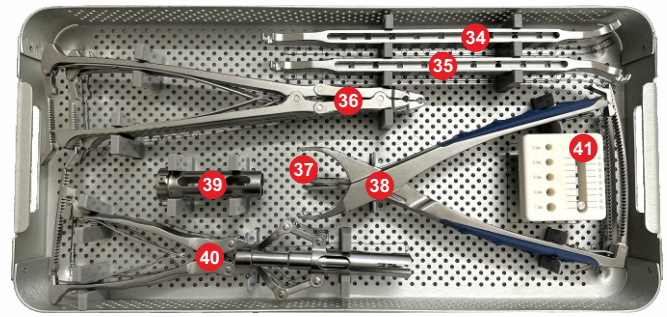
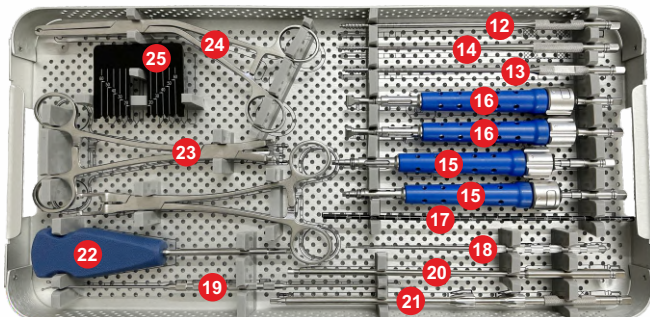
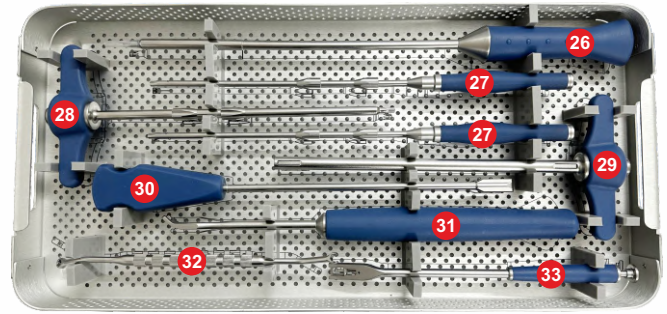
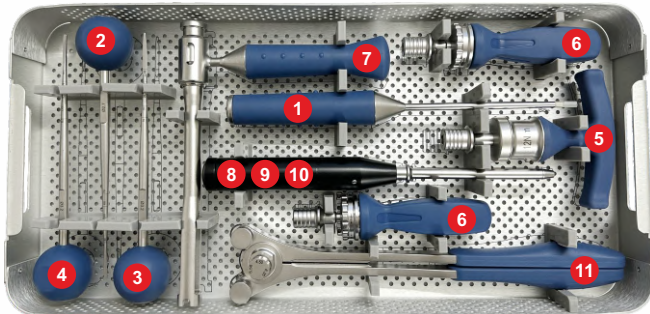


Triangle Connector 3.5mm to 5.5mm

Code : A2736



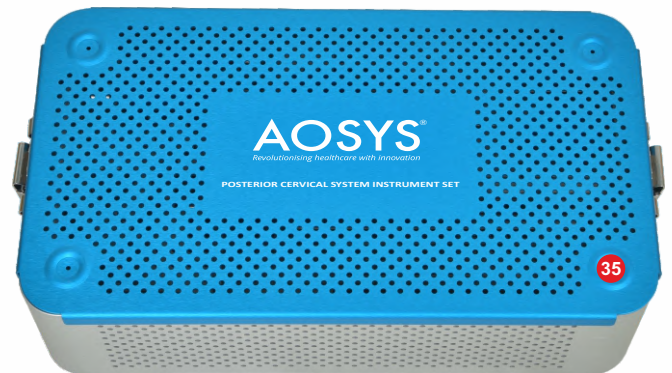
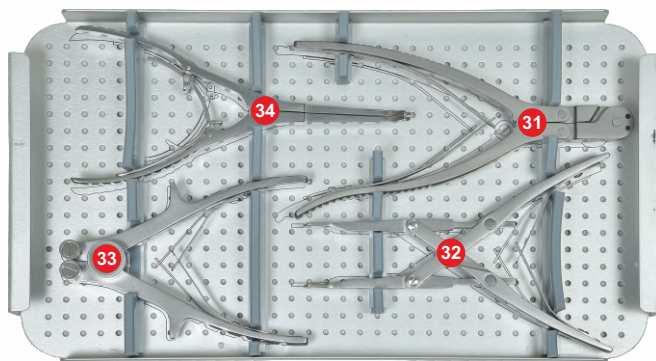
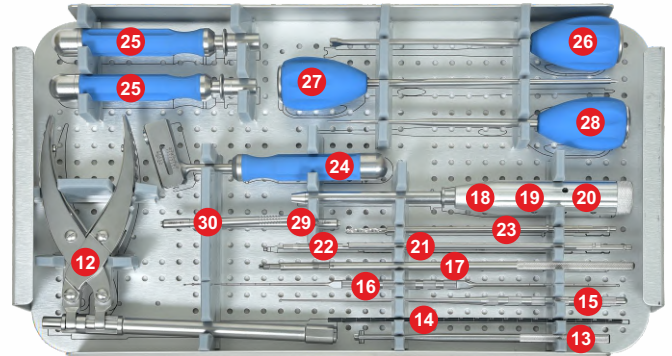
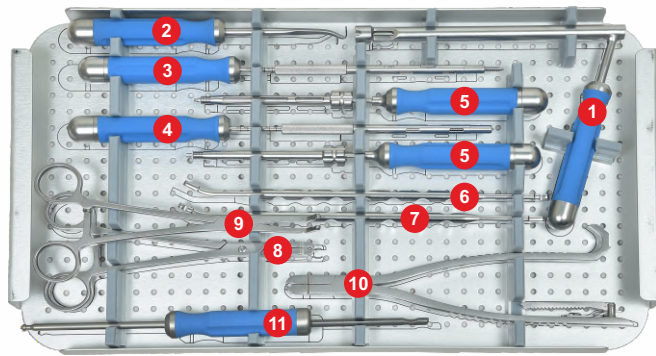
5.5MM PEDICLE SCREWS FOR THORACOLUMBAR FIXATION SYSTEM



Sr.	Ref. No.	Product Name	Qty.
1	X401.01	Awl 2.4mm	1
2	X401.02	Straight Thoracic Probe Dia. 2.7mm	1
3	X401.03	Straight Lumbar Probe Dia. 3.2mm	1
4	X401.04	Curved Lumbar Probe Dia. 3.2mm	1
5	X401.05	Torque-Limiting Driver 12 N.m Q.C.	1
6	X401.06	Ratchet Handle straight Q.C.	2
7	X401.07	Anti-rotation Sleeve Dai. 5.5mm	1
8	X401.08	Marking Pin Sleeve	1
9	X401.09	Ball Type Marking Pin Dia. 2.5mm	4
10	X401.10	Column Type Marking Pin Dia. 2.5mm	4
11	X401.11	Rod Bender Dia. 5.5 / 4.5 / 6.35mm	1
12	X401.12	4.5mm Tap	1
13	X401.13	5.5mm Tap	1
14	X401.14	6.5mm Tap	1
15	X401.15	Polyaxial Screw Driver for 5.5mm system	2
16	X401.16	Monoaxial Screw Driver for 5.5mm system	2
17	X401.17	Trial Rod	1
18	X401.18	Pedicle Feeler	1
19	X401.19	Pedicle Feeler Dual Ended	1
20	X401.20	Pedicle Screw Remove Driver SW 3.5mm	1
21	X401.21	Inner Screwdriver Shaft T27	1
22	X401.22	Screwdriver for Crosslink Connector SW3.0mm	1
23	X401.23	Forceps Rocker	1

Sr.	Ref. No.	Product Name	Qty.
24	X401.24	Rod Holding Forceps Dia. 5.5mm	1
25	X401.25	Crosslink Size Measuring Card	1
26	X401.26	Inner screw Pre-Locking Screwdriver T27	1
27	X401.27	Inner Screw Inserter T27	2
28	X401.28	T Handle Final Tightener T27	1
29	X401.29	Break off Inner Final Tightener	1
30	X401.30	Fixed Angle Screw Positioner	1
31	X401.31	Rod Pusher Dia. 5.5mm	1
32	X401.32	Rod Rotating Forceps dual end SW 5mm	1
33	X401.33	Break off for Reduction Screw	1
34	X401.34	Rod Bender (L) Dia. 5.5mm	1
35	X401.35	Rod Bender (R) Dia. 5.5mm	1
36	X401.36	Rod Gripper	2
37	X401.37	Distractor Forceps 0-35mm	1
38	X401.38	Compression Forceps 50-60mm	1
39	X401.39	Reduction Sleeve	1
40	X401.40	Rod Reducer	1
41	X401.41	Screw Size Measuring block	1
42	X401.42	Instrument Box with 4 trays	1
		Additional Instruments	
43	X401.61	Rod cutter (hand grip) for spine system	1
44	X401.62	Rod cutter (on desk type) for spine system	1

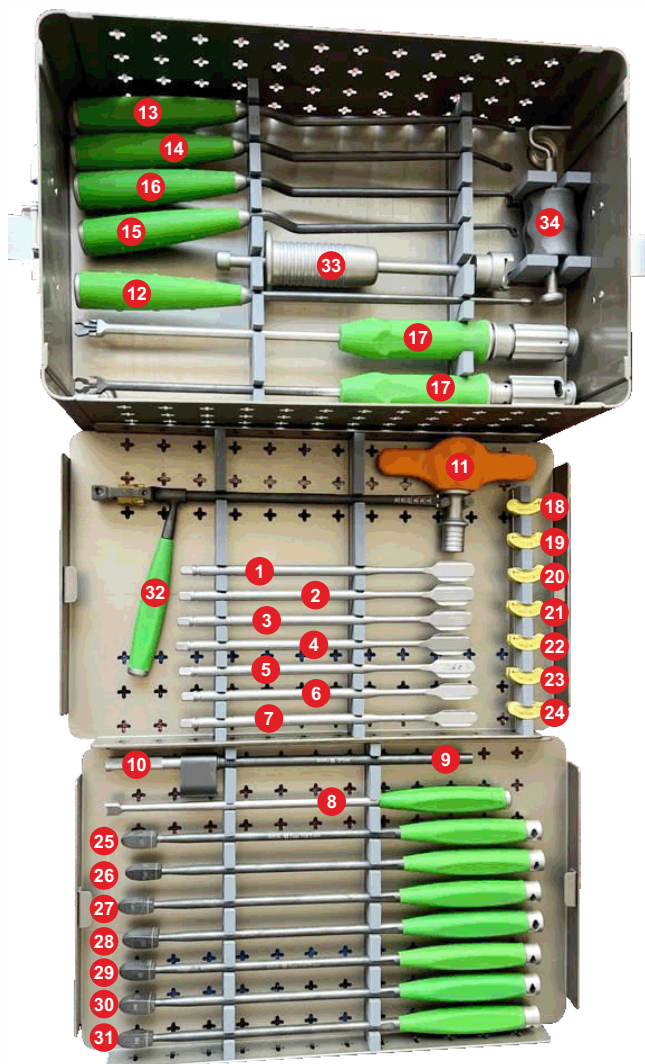
POSTERIOR CERVICAL SYSTEM INSTRUMENT SET



Sr.	Ref. No.	Product Name	Qty.
1	X403.01	Anti Rotation Sleeve Dia. 3.5mm (PCS)	1
2	X403.02	Lamina Hook Probe (PCS)	1
3	X403.03	Tap 3.5mm (PCS)	1
4	X403.04	Tap 4.0mm (PCS)	1
5	X403.05	Polyaxial Screw Driver (PCS)	2
6	X403.06	Rod Bender 3.5mm (Left)	1
7	X403.07	Rod Bender 3.5mm (Right)	1
8	X403.08	Rod Holding Forceps (PCS)	1
9	X403.09	Rocker Forceps for Poly screw 3.5mm (PCS)	1
10	X403.10	Rod Setter for (PCS)	1
11	X403.11	Depth Meter (PCS)	1
12	X403.12	Gun Type Reduction Forceps (PCS)	1
13	X403.13	Screw Alignment Tool (PCS)	1
14	X403.14	Template Rod (PCS)	1
15	X403.15	Pedicle feeler straight for (PCS)	1
16	X403.16	Double Head Pedicle feeler for (PCS)	1
17	X403.17	Inner screw Inserter (PCS)	2
18	X403.18	Marking Pin Sleeve (PCS)	1

Sr.	Ref. No.	Product Name	Qty.
19	X403.19	Ball Type Marking Pin Dia. 2.0mm (PCS)	4
20	X403.20	Column Type Marking Pin Dia. 2.0mm (PCS)	4
21	X403.21	Screw Driver Shaft SW 2.5mm for Poly screw (PCS)	1
22	X403.22	Screw Driver Shaft Long SW 3.0mm for Inner screw (PCS)	1
23	X403.23	Drill Bit QC Dia. 2.2mm	2
24	X403.24	Drill Guide with Measurement	1
25	X403.25	Quick coupling Handle	2
26	X403.26	Rod Pusher 3.5mm	1
27	X403.27	Awl for 3.5mm (PCS)	1
28	X403.28	Straight Probe for 3.5mm (PCS)	1
29	X403.29	Sleeve 8 to 16mm drill for (PCS)	1
30	X403.30	Sleeve 16 to 30mm drill for (PCS)	1
31	X403.31	Rod Cutting Forceps for (PCS)	1
32	X403.32	Compression Forceps	1
33	X403.33	Rod Bending Forceps	1
34	X403.34	Distraction Forceps	1
35	X403.35	Instrument Box for (PCS)	1
36	X403.36	Implant Box for Posterior Cervical	1

PLIF - TLIF CAGE INSTRUMENT SET



Sr.	Ref. No.	Product Name	Qty.
1	X402.01	PLIF - TLIF CAGE SHAVER 8MM	1
2	X402.02	PLIF - TLIF CAGE SHAVER 9MM	1
3	X402.03	PLIF - TLIF CAGE SHAVER 10MM	1
4	X402.04	PLIF - TLIF CAGE SHAVER 11MM	1
5	X402.05	PLIF - TLIF CAGE SHAVER 12MM	1
6	X402.06	PLIF - TLIF CAGE SHAVER 13MM	1
7	X402.07	PLIF - TLIF CAGE SHAVER 14MM	1
8	X402.08	Cage Pusher Straight	1
9	X402.09	CAGE FUNNEL	1
10	X402.10	Cage Funnel graft pusher	1
11	X402.11	T-HANDLE with Q.C.	1
12	X402.12	Straight cup curret	1
13	X402.13	Left cup curret	1
14	X402.14	Right cup curret	1
15	X402.15	ring cup curret	1
16	X402.16	small forward angle curret	1
17	X402.17	TLIF CAGE HOLDER	2
18	X402.18	TLIF CAGE TRIAL 8 MM	1
19	X402.19	TLIF CAGE TRIAL 9 MM	1
20	X402.20	TLIF CAGE TRIAL 10 MM	1
21	X402.21	TLIF CAGE TRIAL 11 MM	1
22	X402.22	TLIF CAGE TRIAL 12 MM	1
23	X402.23	TLIF CAGE TRIAL 13 MM	1
24	X402.24	TLIF CAGE TRIAL 14 MM	1
25	X402.25	Plif Cage Trial 8mm	1
26	X402.26	Plif Cage Trial 9mm	1
27	X402.27	Plif Cage Trial 10mm	1
28	X402.28	Plif Cage Trial 11mm	1
29	X402.29	Plif Cage Trial 12mm	1
30	X402.30	Plif Cage Trial 13mm	1
31	X402.31	Plif Cage Trial 14mm	1
32	X402.32	PLIF Cage Holder	1
33	X402.33	Slot Hammer for Tlif	1
34	X402.34	Slot Hammer for Plif	1
35	X402.35	cage holder for bone graft	1
36	X402.36	PLIF-TLIF Instrument set box	1

Product Marketed by :



Medisurg International

A/217, Tirthraj Complex, Opp. Hasubhai Chamber,
Madalpur, Ellisbridge, Ahmedabad-380006. (Gujarat) India.

Mobile : +91 9727 42 43 69.

Email : info@medisurg.in

Manufacturing Facility :

AOSYS[®]

Revolutionising healthcare with innovation

Aosys Private Limited

*Plot No : 66 & 67, Shreeji Charan Industrial Park,
Opp KP Kanta Bakrol Road, Indore Highway, Kujad Bakrol,
Taluka Daskroi 382430, District Ahmedabad.*

Mobile : +91 92272 53532, +91 98255 28258

Email : info.aosys@gmail.com

Visit Us : www.aosyspvtltd.com, www.aosys.in